



TIPS & TRICKS BY SCOTT DUILLET OF OVERLAY OFFICE

GUIDE TO  
**CREATING A SAFE &  
AESTHETIC OUTDOOR  
SEATING INFRASTRUCTURE**





# Functional & Beautiful

Functionality and beauty are not mutually exclusive. In fact, good design is functional AND beautiful.

At OTW Safety, our priority is exactly what the name implies - safety. Often, our barricades are used on construction sites, at airports or in large parking lots but safety products are not limited to these industries. These sites often require barricades in bright Safety Orange and White, and this combination isn't particularly easy on the eyes for a good reason.

When it comes to barricades, you don't have to choose functionality over beauty. Thanks to the special design of the OTW32x45 barricade you can create a more compact and beautiful linear channeling device to create a safety barrier. Add our Custom Billboard Barricades (pictured above) to add to the aesthetic. We can match any pantone color and add custom signs designed by you to the Billboard Barricade.

PICTURED: LA ÑAPA, BROOKLYN NY  
VENEZUELAN TAPAS RESTAURANT

But how creative can one really get with barricades? Thanks to our friends at Overlay Office, we were able to test just that.

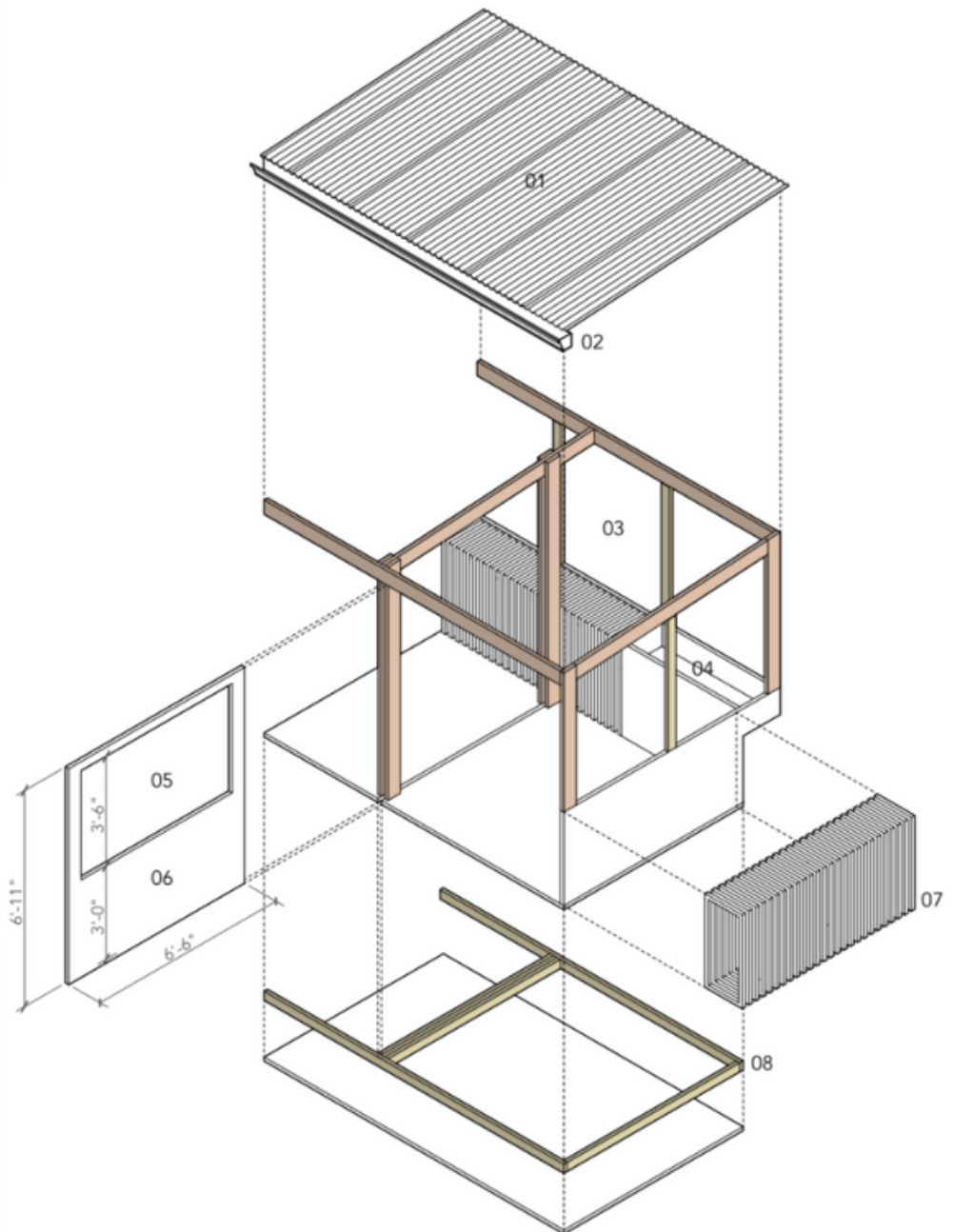
Many small businesses struggled to stay afloat during the pandemic and OTW Safety did its best to provide support where it could. One of our favorite Brooklyn tapas stops, La Ñapa, was hit hard by the pandemic. Quick thinking gave them an idea: building an outdoor, COVID restriction compatible seating area. Overlay Office tasked pro-bono Design Advocates to create a beautiful and safe outdoor eating area that utilizes our OTW32x45 JSS Safety Barricades in White.

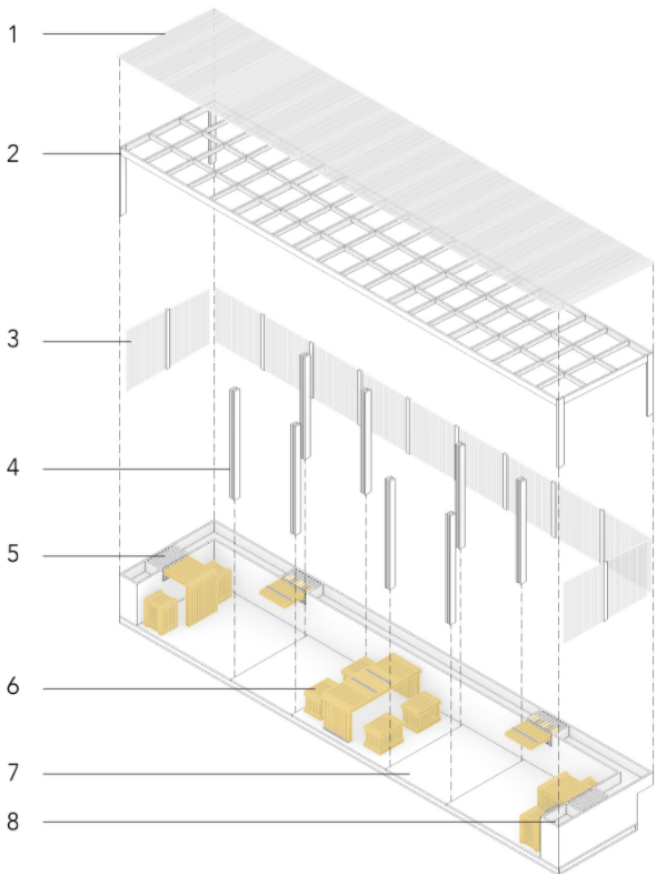
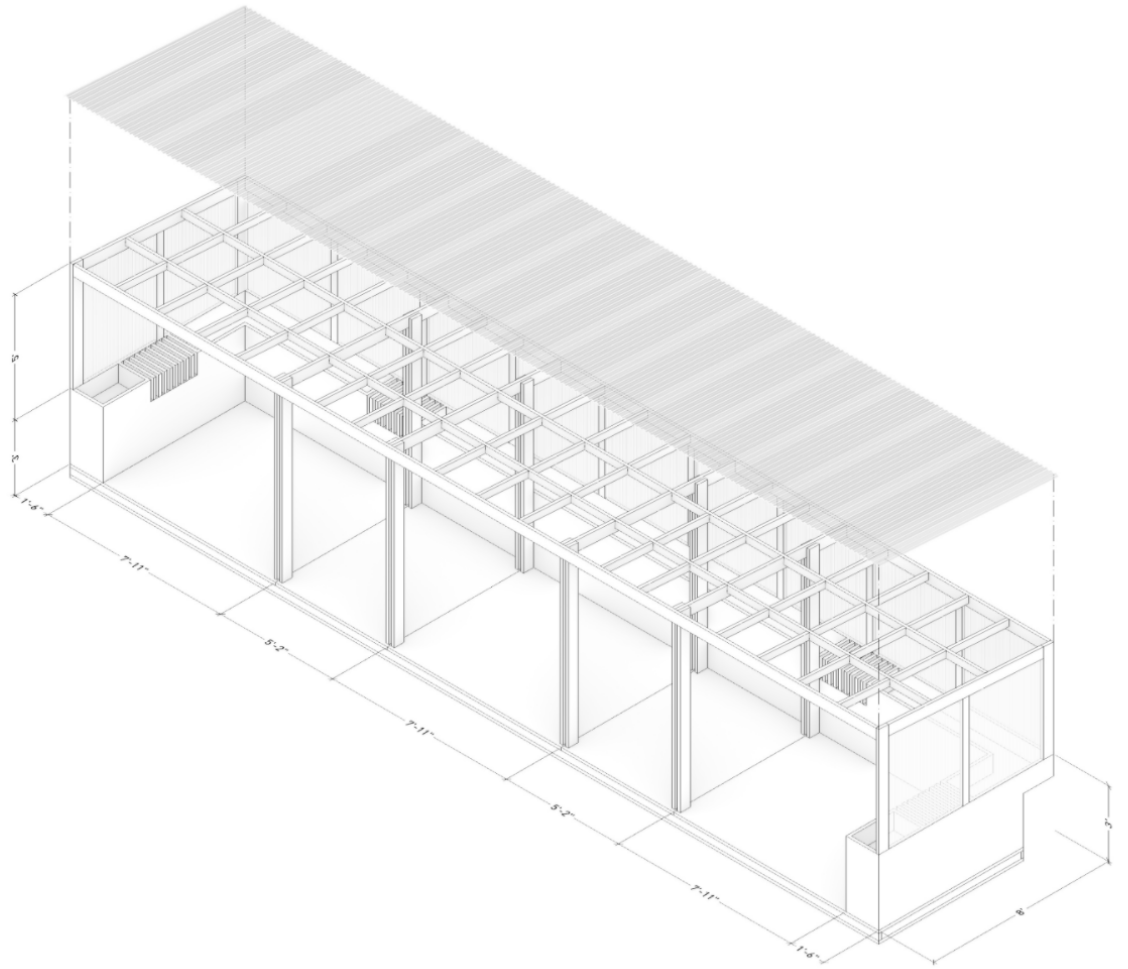
## Here is the result:

### Construction Set Corner Study

2x4 Timber (yellow)  
2x6 Timber (orange)

- 01 Corrugated Plastic Roof: 6" slope towards restaurant
- 02 Gutter
- 03 Exterior window panels: must be easily removable
- 04 Planters: to be made out of marine plywood and account for drainage
- 05 Window panel for divider
- 06 Slide-in divider made up of nominal timber
- 07 Bar Slats: use wooden blocks to connect (like furniture)
- 08 Nominal timber as structure of floor





- 1 Roof
- 2 Roof Structure
- 3 Windows
- 4 Main Columns
- 5 Ribbed Barrier
- 6 Custom Ribbed Furniture
- 7 Base Platform
- 8 Planter Barrier

# Tips & Tricks

CREATING A SAFE & AESTHETIC  
OUTDOOR SEATING INFRASTRUCTURE



Think about your threshold! Your outdoor seating area will often be located on the street itself, while your clients will access it via the elevated sidewalk.

Account for this change in altitude, and make sure you keep in mind the existing slopes and angles of the roads your design will be seated on.

Curate for your clients' senses! There are multiple strategies to limit the impact of the bustling urban environment that might surround your structure. Views can be obstructed or enhanced depending on the materials you use, while sound and smell can be minimized by the use of planters and greenery.

**OVERLAY**

design | development  
project management

**OTW**  
**SAFETY**



Don't forget lighting! Allowing you to further curate your clients' experience, lighting can be a great way to change the mood and ambiance of your space, don't forget to plan your electrical wiring accordingly.

Account for seasons & weather! Roofing & windows materials will help your structure adapt to its varying environment. While translucent plastic windows allow sunlight through while keeping the heat inside during the cold winter months, a swappable mesh panel could offer air circulation and scenery masking during the summer. Mix and match different strategies to stay comfortable all year long.

Note: Your threshold strategy can help by accounting for drainage. We recommend an elevated hollow platform the levels the seating area with the sidewalk and lets water run underneath.

## Finally - safety first!

While Open Restaurants is a fantastic tool helping businesses adapt along with evolving seating restrictions, some features haven't been properly accounted for. In order to ensure the program's longevity, the safety of your end user needs to be a priority and an early consideration during the design phase. We recommend using water-filled barriers along the traffic-exposed perimeter of your structure.



# Fabrication & Maintenance

Modularity is the name of the game here. Try to use as many nominal off-the-shelf pieces as possible, and keep their connections simple and easy to maintain.

Dining experiences evolve with the restaurant and its surroundings.

A modular system that facilitates, for example, the addition and removal of window panels is key to account for the changes in the environment, while having a bar area with slide-in features is a nice way to offer some flexibility to the owner to switch from one type of seating to another





# Ready to plan your outdoor seating area?

## OVERLAY

<https://overlayoffice.com/>

Business collaborations and inquiries:  
[collaborate@overlayoffice.com](mailto:collaborate@overlayoffice.com)

## OTW SAFETY

<https://otwsafety.com/>

8 AM to 5 PM MST: (801) 363-7740  
[orders@otwsafety.com](mailto:orders@otwsafety.com)

## LA·ÑAPA

<https://www.lanapamarket.com/>

